



ScanSnap SV600

A New Perspective on Scanning



RICOH
imagine. change.



Redefining what a document scanner can do!

Overhead scanning made simple

Scan newspapers, magazines or books directly without cutting or damaging them.

Preserve delicate documents or books

Some things can't be scanned through a feeder so ScanSnap SV600 operates by taking an elevated view altogether.

Scan business cards to large A3 size (double-letter) documents

ScanSnap SV600 breaks free from typical flatbed limitations by scanning content larger than just letter size. Simply position the document on the A3 scan mat and press scan.

Save time, save effort

Make it an easy job by scanning not only books or magazines but all types of content restrained in binders, spirals, folders, or clear sleeves... just flip the page and scan.



VI Technologies (Versatile Imaging)

Combining high quality CCD optics and advanced LED illumination, ScanSnap SV600 uses advanced capture technologies to maximize field of depth and minimize unevenness page after page.

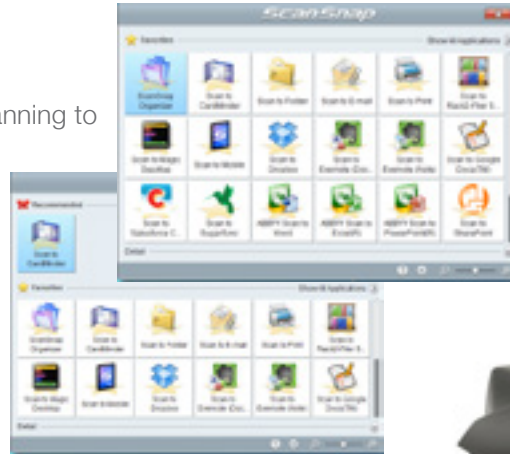


Smooth operation in overhead scanning

ScanSnap SV600 is enhanced with new customized features while continuing the ScanSnap concept: Simple, Fast and Compact.

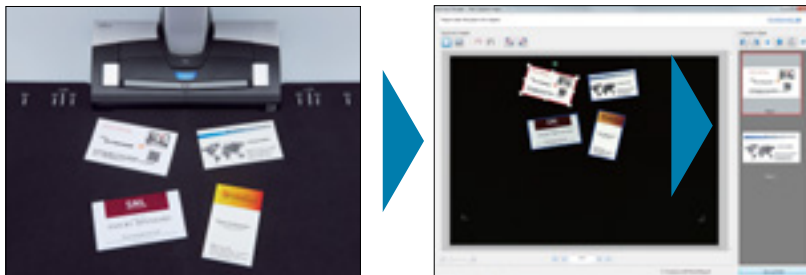
Quick Menu saves time!

The Quick Menu pops up after scanning to allow users a fast and productive way to store, share or transform their scanned data either on the computer or into a favorite cloud service like Evernote or Dropbox.



Automatically crop several documents at once with "Multiple Document Detection"

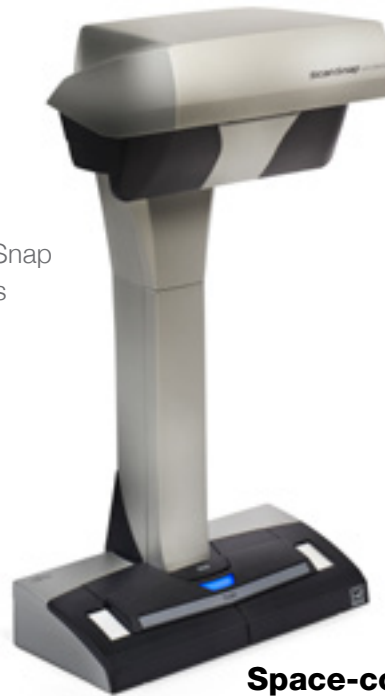
With an advanced cropping and orientation technology built-in, ScanSnap SV600 can scan several business cards, photos, newspaper clippings and other documents at one time.



ScanSnap Receipt™

ScanSnap Receipt allows users to easily scan and extract information from receipts, and export the data into CSV for easy tax filing. ScanSnap Receipt also supports multiple languages and currencies.*

*Supported languages: English, Spanish, French, German, Italian, Russian.
Supported currency's: USD (United States Dollar), CAD (Canadian Dollar), GBP (Great Britain Pound), EUR (Euro), RUB (Russian ruble), AUD (Australian dollar)



Performance matters.

With the touch of the power button, ScanSnap SV600 is ready to scan in just 3 seconds! And with each press of the scan button, a large A3 dimension scan area is captured in less than 3 seconds. Combined with intelligent image correction, great results are just a button push away.



Space-conscious design

Breaking the bounds of typical flatbed scanning, ScanSnap SV600 is easy on space as well as effort.

Easily create your own digital books

ScanSnap SV600 is your ultimate partner to scan books or magazines efficiently.

Step 1: Scan with one button!

Place the book on the mat and press the scan button.

Page Turning Detection – SV600 detects when a page is turned and automatically begins scanning.

Timed Mode – Set a fixed time interval and SV600 scans in real time with you.

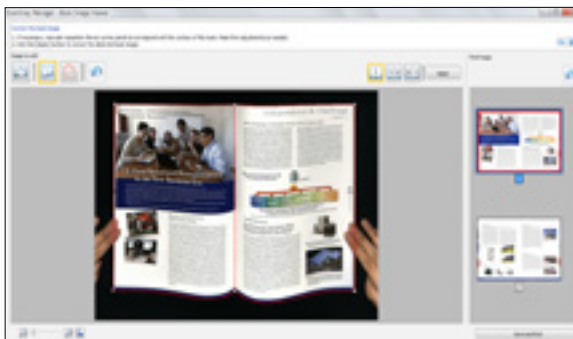
Step 2: Auto image correction

Auto Image Correction – Automatically crops, de-skews and sets the orientation of multiple sheets placed on the mat.

Auto Book Correction - Automatically flattens and corrects the curve distortion of books and magazines.

ScanSnap Sync

Quickly and easily synchronize your scanned documents between ScanSnap Organizer on your computer and the ScanSnap Connect App on your mobile device using Dropbox, Google Drive or OneDrive. ScanSnap Sync automatically synchronizes scanned documents between your computer and mobile device, giving you more flexibility to manage your scanned data.

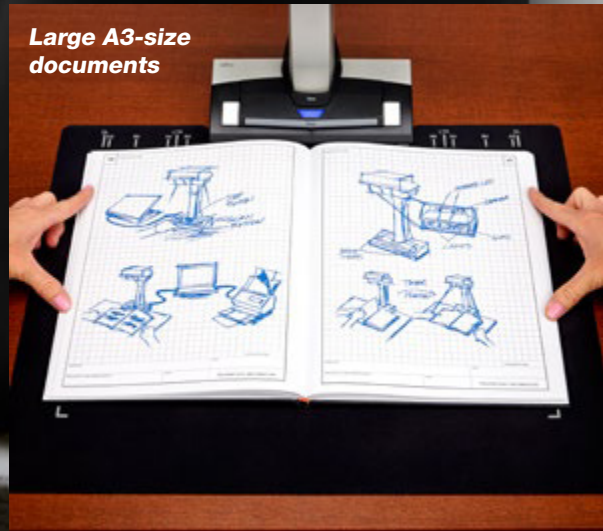


Book image correction
Flattens and corrects curve distortion.



Point retouch function
Fingers captured during scanning can be removed.





■ General Specifications

Description	ScanSnap SV600	
Scanner type	Over Head system, simplex scanning	
Scanning modes	Color, grayscale, monochrome, Automatic (color, grayscale, monochrome detection)	
Image sensor	Lens reduction optics / color CCD x 1	
Light source	(White LED + lens illumination) x 2	
Optical resolution	Horizontal scanning: 285 to 218 dpi, Vertical scanning: 283 to 152 dpi ^{*1}	
Scanning speed (A3 landscape) ^{*2}	Auto mode ^{*3}	"Better mode" or "Best mode": 3 seconds / page
	Normal mode	Color / Grayscale: 150 dpi, Monochrome: 300 dpi 3 seconds / page ^{*4}
	Better mode	Color / Grayscale: 200 dpi, Monochrome: 400 dpi 3 seconds / page ^{*4}
	Best mode	Color / Grayscale: 300 dpi, Monochrome: 600 dpi 3 seconds / page ^{*4}
	Excellent mode	Color / Grayscale: 600 dpi, Monochrome: 1,200 dpi 3 seconds / page ^{*4}
Document size	Automatically recognizes document size, A3(landscape), A4(landscape), A5(landscape), A6(landscape), B4(landscape), B5(landscape), B6(landscape), Post card, Business card, Double Letter(landscape), Letter, Legal(landscape) and Customized size (Max: 432 x 300 mm (17.0 x 11.8 in.), Min: 25.4 x 25.4 mm (1 x 1 in.)) ^{*5}	
Document thickness	30 mm (1.18 in.) or less	
How to start scanning ^{*6}	Select one of the below. 1. Normal scan: Press "Scan" button for every page 2. Timed Interval Scanning (Timed Mode) 3. Page turning detection	
Interface ^{*7}	USB2.0 / USB1.1 (connector: B Type)	
Image processing functions	Deskew by text on document, Auto paper size detection, Auto image rotation, Auto color detection, Book image correction ^{*8} , Multiple document detection ^{*9}	
Magnification in vertical scanning (length)	±1.5%	
Power requirement	AC 100 to 240 V, 50 / 60 Hz	
Power consumption	Operating mode: 20 W or less Sleep mode: 2.6 W or less Auto Standby (Off) mode: 0.4 W	
Operation environment	Temperature: 5 to 35 °C (41 to 95 °F) Relative humidity: 20 to 80 % (Non-condensing)	
Dimensions (W x D x H)	210 x 156 x 383 mm	
Device weight	3 kg (6.613 lb)	
Environmental compliance	ENERGY STAR [®] / RoHS	
Driver	Specific driver (Does not support TWAIN / ISIS [™])	

^{*1} Optical resolution differs due to different scanning angle on the same document. ^{*2} Scanning speeds may vary due to the system environment. For details, please visit our website at: <https://www.pfu.ricoh.com/global/scanners/scansnap/>. ^{*3} Switch between "Better mode" and "Best mode" depends on the length of the document. A4 (portrait): 200 dpi, A6 size or below: 300 dpi ^{*4} Time between actual start of scanning (scanning pad) and finish scanning. ^{*5} For documents of thickness over 5 mm, the maximum document size is 400 x 300 mm. ^{*6} When performing continuous scanning, time is needed for the scanning head to return to its original position. ^{*7} Compatible with USB 3.0 port but connection will run as USB 2.0 speed. ^{*8} Automatically correct distortion caused by the curve of an opened book or magazine. ^{*9} Digitize multiple documents by automatically cropping several documents in one scan.

■ Cleaning Materials

Description	Part number	Remarks
Cleaner F1	PA03950-0352	100 ml bottle For cleaning the glass, camera, lamp etc of the scanning head.
Cleaning Wipe	PA03950-0419	1 pack (24 packets) Wet tissue with "cleaner F1". For cleaning the glass, camera, lamp etc of the scanning head.

■ Software

Windows [®]	macOS
ScanSnap Home ^{*1}	
ScanSnap Manager ^{*2}	
Kofax Power PDF Standard ^{*3}	Kofax Power PDF Standard for Mac ^{*3}
ABBYY FineReader for ScanSnap [™]	

^{*1} ScanSnap Home installation requires a computer and Internet. Activation is also necessary for software use. Please visit the company website for download information. <https://www.pfu.ricoh.com/global/scanners/scansnap/g-support/en/>
^{*2} Use in conjunction with ScanSnap Home requires ScanSnap Manager V7 and later. ^{*3} Please refer to the included license certificate to download the software.

This scanner is designed to digitize materials that can be reproduced lawfully, in accordance with applicable copyright regulations and other laws. ScanSnap users are responsible for how they use this scanner. It is imperative that ScanSnap users comply with all applicable local rules and laws, including, without limitation, copyright laws when using this scanner.

*ABBYY and FineReader are trademarks of ABBYY Software, Ltd. which may be registered in some jurisdictions. ABBYY[™] FineReader[™] Engine ©ABBYY. OCR by ABBYY[™] Intel, Pentium, and Intel Core are registered trademarks or trademarks of Intel Corporation in the United States and other countries. *ISIS[™] is a registered trademark of EMC Corporation in the United States. *Mac, macOS, and the Mac logo are trademarks of Apple Inc. *Kofax and Power PDF are trademarks or registered trademarks of Kofax Limited in the United States and other countries. *ScanSnap, the ScanSnap logo and ScanSnap Home are registered trademarks or trademarks of PFU Limited in Japan. *Other company names and product names are the registered trademarks or trademarks of the respective companies.



PFU Limited has determined that this product meets the ENERGY STAR[®] guidelines for energy efficiency. ENERGY STAR[®] is a registered trademark of the United States.

Safety Precautions	Be sure to carefully read all safety precautions prior to using this product and use this device as instructed.	Do not place this device in wet, moist, steamy, dusty or oily areas. Using this product under such conditions may result in electrical shock, fire or damage to this product.

■ ScanSnap SV600 System Requirements

● Windows[®]

Recommended operating systems		Windows [®] 11 (64-bit) Windows [®] 10 (32-bit / 64-bit) ^{*1,*2}
Hardware requirements ^{*3}	CPU ^{*4}	Intel [®] or Intel [®] -compatible processors
	Display resolution	1,024 x 768 pixels or higher
	Disk capacity ^{*5,*6}	3.8 GB or more of free hard disk space

^{*1} ScanSnap scanners do not run with Windows[®] 11 and 10 ARM-based PCs. ^{*2} Operate Windows in desktop mode. ^{*3} The ScanSnap device may not work if the connected computer does not meet these requirements. ^{*4} Scanning speeds may vary due to the system environment. ^{*5} Indicated disk capacity requirements apply when downloading ScanSnap Home. ^{*6} Microsoft .NET Framework 4.7 or later must be installed. If it is not installed, it is installed with ScanSnap Home. Up to 4.5 GB of disk space is required for the installation. *Please refer to the ScanSnap website for the latest support information of the driver and applications. Compatibility may differ depending on the software's version. *The system requirements may change depending on the duration of support and the support policy of the companies that make the software.

● Mac

Recommended operating systems		macOS Mojave 10.14 or later
Hardware requirements ^{*1}	CPU ^{*2}	Intel [®] or Apple M1 / M2 processors
	Display resolution	1,024 x 768 pixels or higher
	Disk capacity	2.0 GB or more of free hard disk space

^{*1} The ScanSnap device may not work if the connected computer does not meet these requirements. ^{*2} Scanning speeds may vary due to the system environment. *Please refer to the ScanSnap website for the latest support information of the driver and applications. Compatibility may differ depending on the software's version. *The system requirements may change depending on the duration of support and the support policy of the companies that make the software.

■ Included items

<ul style="list-style-type: none"> ● AC cable ● AC adapter ● Safety Precautions ● USB cable ● Background Pad ● Extenders (x2)

■ Option

Description	Part number	Remarks
Background Pad	PA03641-0052	Set in front of the scanner when scanning. ^{*1} One pad is bundled with the scanner.